



29 Dale Close, West Bridgford, NG2 6LH

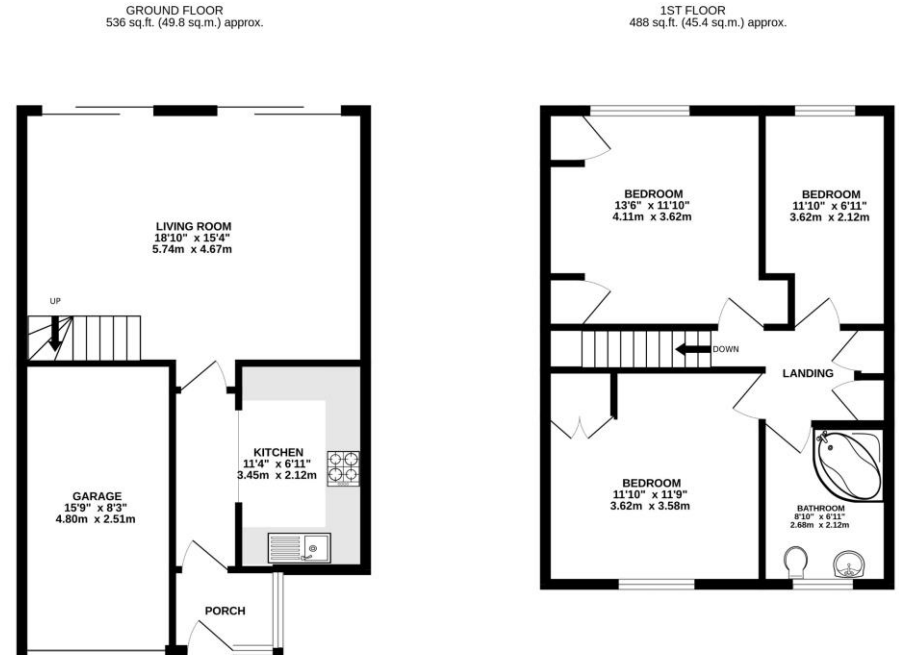
Guide Price: £280,000

29 Dale Close, West Bridgford, NG2 6LH

A three bedroom home in West Bridgford's popular Abbey Park. The property has an integral garage and driveway parking to the front. In brief the accommodation consists of porch, entrance hall, separate kitchen and a large living room with two sets of slide patio doors onto a good size rear garden with patio. Upstairs there are three bedrooms and a bathroom. Gas central heating and double glazing. No upward chain. Within catchment for the Abbey Road Primary School and the Rushcliffe Spencer Academy.

Accommodation & Amenities

- Three Bedroom Two Storey House
- Large Living Room with Separate Kitchen
- Driveway & Integral Garage
- Gas Central Heating & Double Glazing
- Good Size Rear Garden
- Popular West Bridgford Location
- Abbey Road Primary and the Rushcliffe Spencer Academy Catchment
- No Upward Chain



TOTAL FLOOR AREA : 1024 sq.ft. (95.1 sq.m.) approx.
Whilst every attempt has been made to ensure the accuracy of the floorplan contained here, measurements of doors, windows, rooms and any other items are approximate and no responsibility is taken for any error, omission or mis-statement. This plan is for illustrative purposes only and should be used as such by any prospective purchaser. The services, systems and appliances shown have not been tested and no guarantee as to their operability or efficiency can be given.
Made with Metropix ©2024



